

8"



MAVERICK A8 PRO QUICK START GUIDE

Quick Start Guide

Turning on your tablet

1. The Power button is located on the front of your tablet. Press and hold it for 5-10 seconds to turn the device on or off

Brightness Settings

1. On the home screen, swipe down from the top of the screen to reveal the quick-access menu.
2. Swipe down again to reveal the brightness slider.

Connect to a Wi-Fi Network

1. On the home screen, swipe down from the top of the screen to reveal the quick-access menu.
2. Swipe down again to reveal the full icon menu.
3. Press and hold the Wi-Fi icon; this will open the Wi-Fi menu which has the option to connect and disconnect to a Wi-Fi network.

Connect to a Bluetooth device

1. On the home screen, swipe down from the top of the screen to reveal the quick-access menu.
2. Swipe down again to reveal the full icon menu.
3. Press and hold the Bluetooth icon; this will open the Bluetooth menu which has the option to pair and unpair with a Bluetooth device.

Assigning the function keys

1. In the settings menu, select the "Special Function" option.
2. Select the "A1A2 Shortcut Key" option to set an app or action to each specific function key.

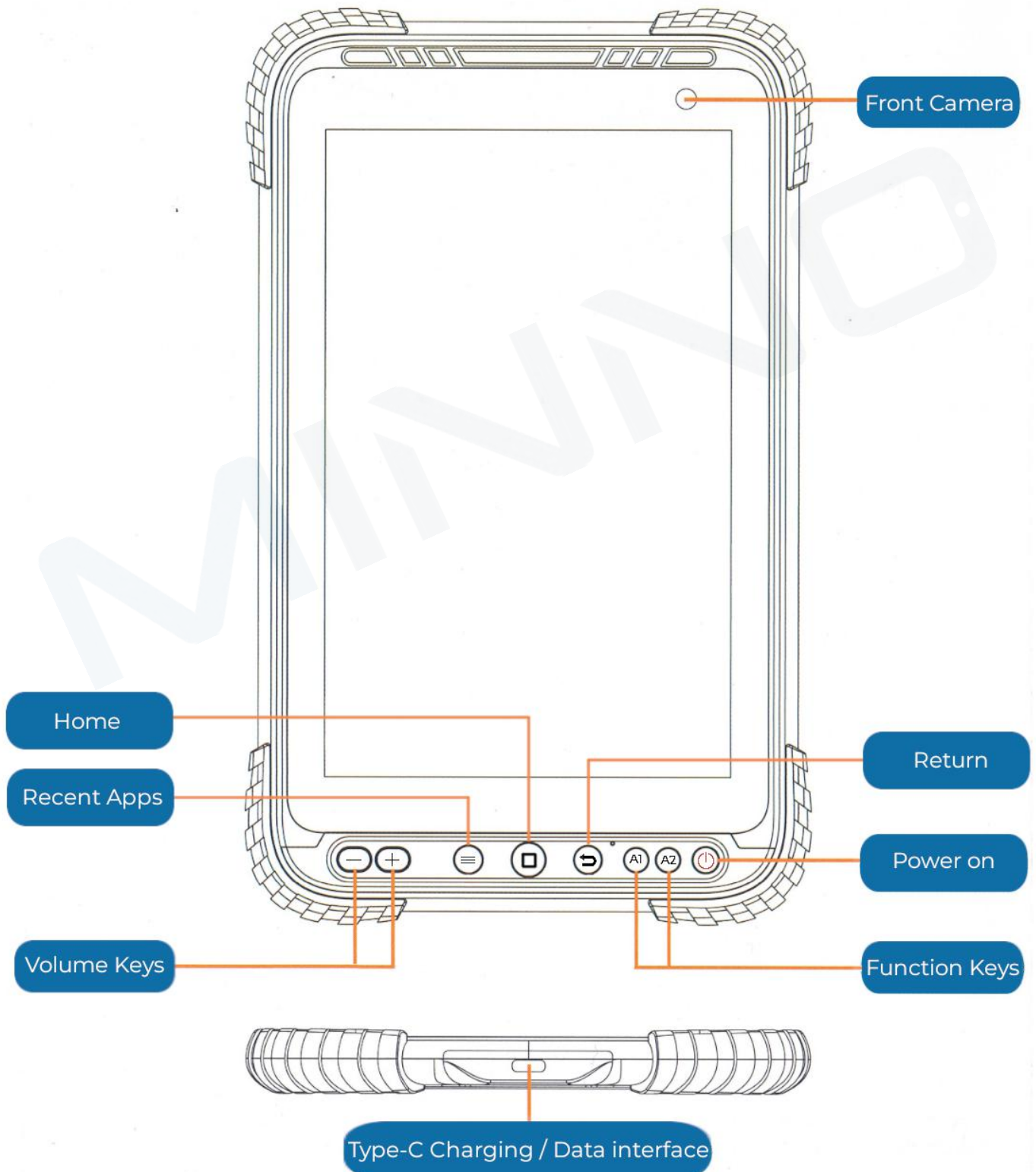
Contact us

Website: www.ruggedtablets.com

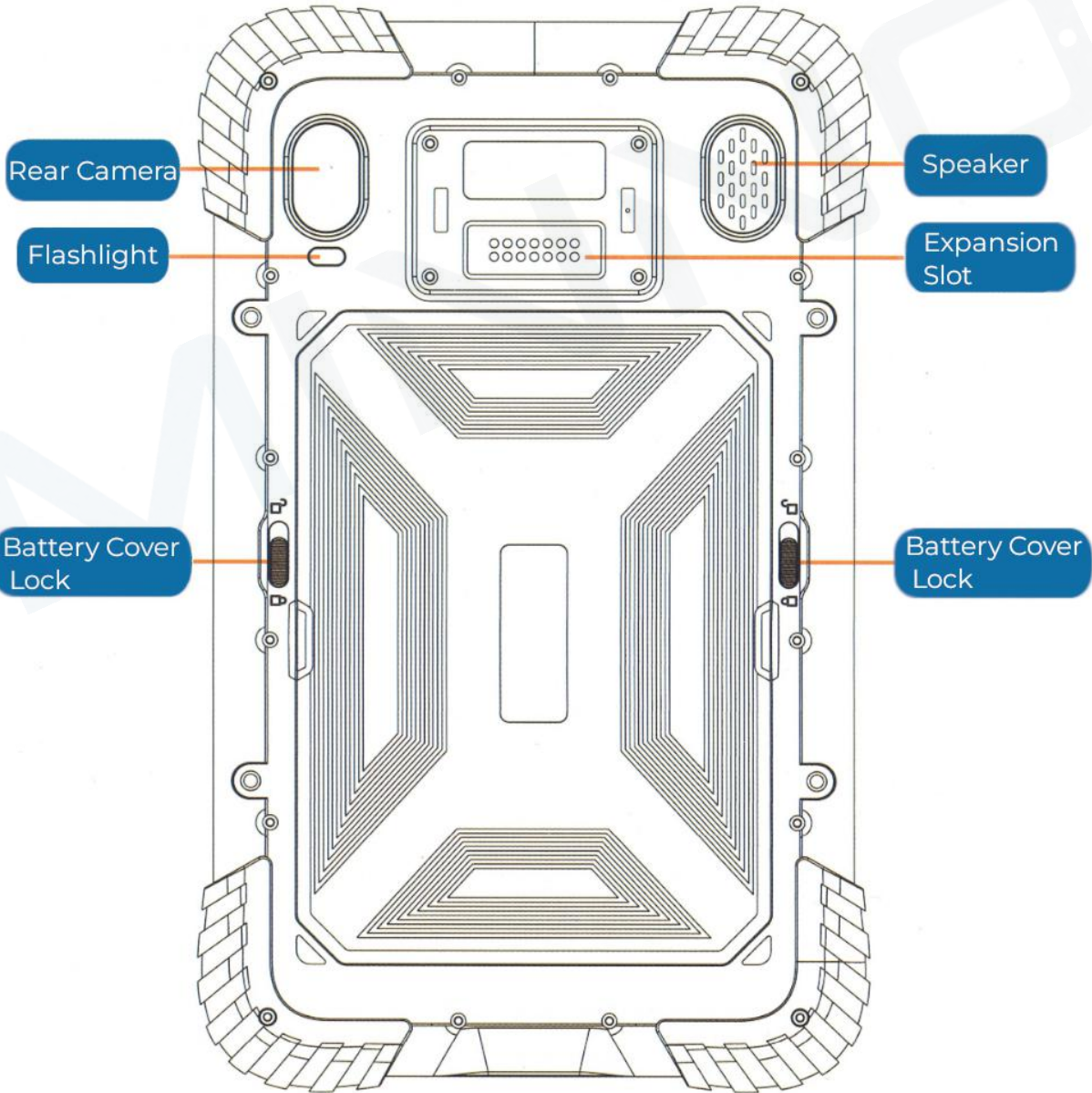
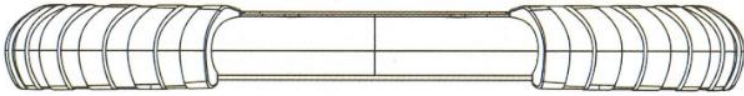
Email: info@minnotablet.com

Phone: +1 805-962-3084

Front View

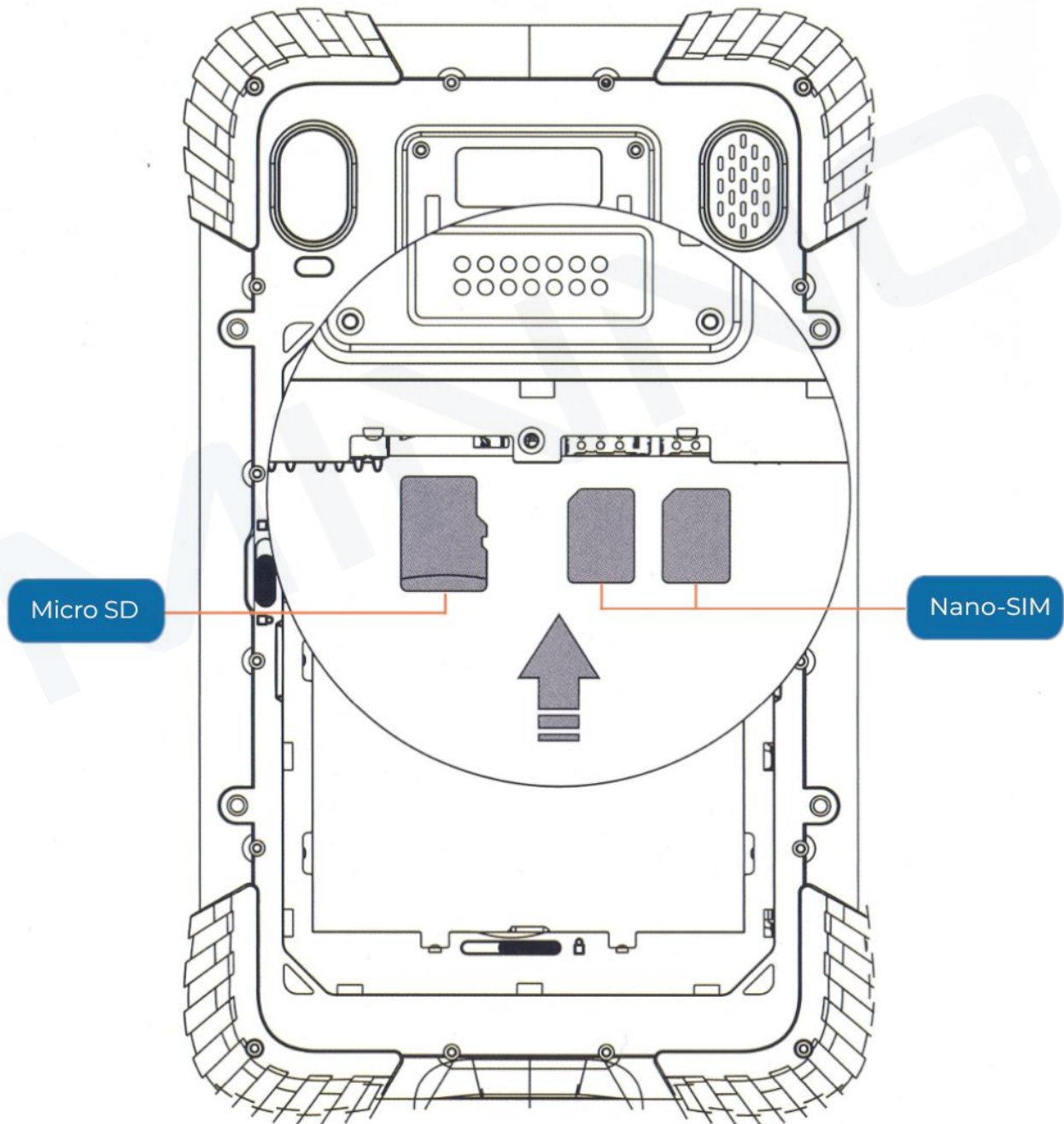


Back View



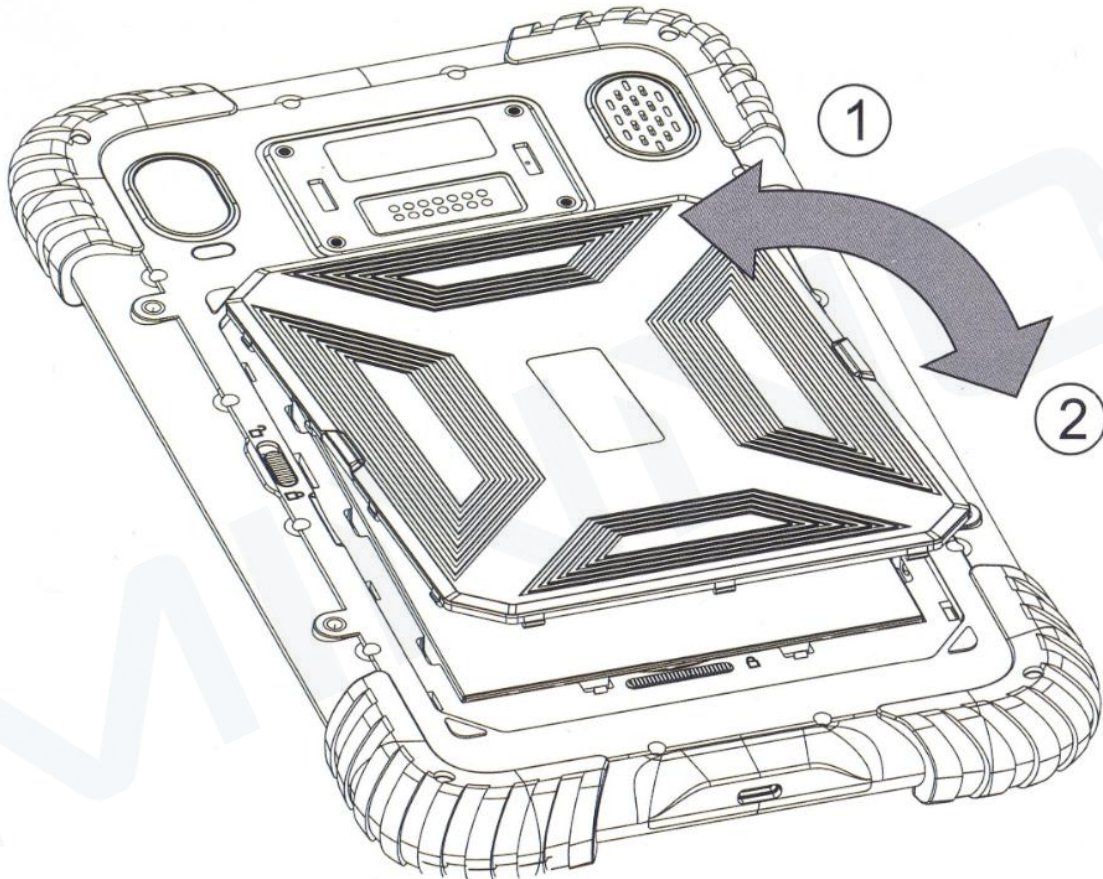
Memory & SIM Installation

Insert the Micro SD and Nano SIM cards following the directions shown in the diagram. The slots are located underneath the battery



Battery Swap

Install the battery in the correct order.



1. Disengage the battery lock
2. Pull the cover up from the raised sides
3. Disengage the battery lock
4. Replace the battery
5. Re-engage the battery lock
6. Line up the cover pins at the top
7. Press down around the sides of the cover.
8. Re-engage the cover locks