

6"



APEX A6 QUICK START GUIDE

Quick Start Guide

Turning on your tablet

1. The Power button is located on the right edge of your tablet. Press and hold it for 5-10 seconds to turn the device on or off

Brightness Settings

1. On the home screen, swipe down from the top of the screen to reveal the quick-access menu.
2. Swipe down again to reveal the brightness slider.

Connect to a Wi-Fi Network

1. On the home screen, swipe down from the top of the screen to reveal the quick-access menu.
2. Swipe down again to reveal the full icon menu.
3. Press and hold the Wi-Fi icon; this will open the Wi-Fi menu which has the option to connect and disconnect to a Wi-Fi network.

Connect to a Bluetooth device

1. On the home screen, swipe down from the top of the screen to reveal the quick-access menu.
2. Swipe down again to reveal the full icon menu.
3. Press and hold the Bluetooth icon; this will open the Bluetooth menu which has the option to pair and unpair with a Bluetooth device.

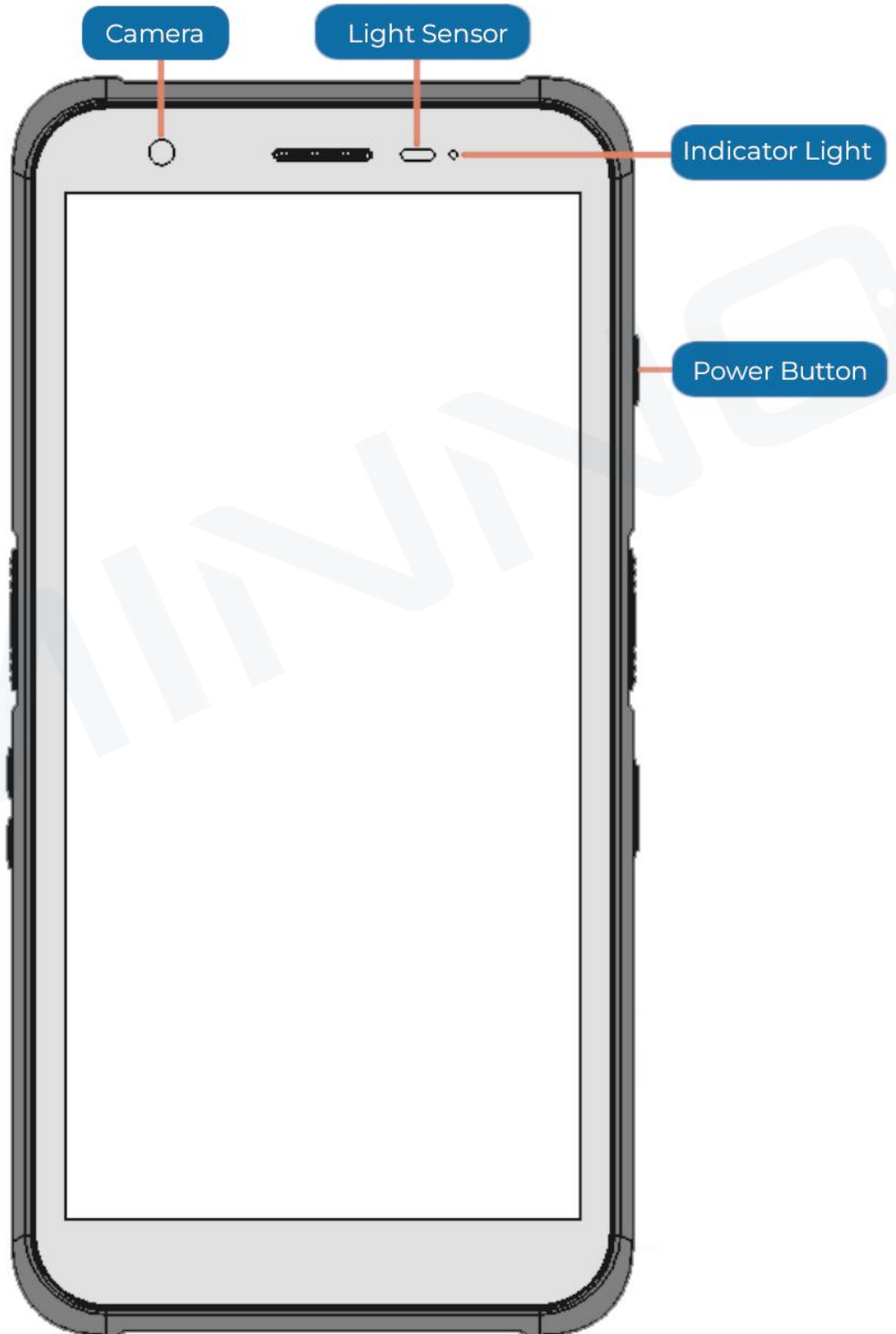
Contact us

Website: www.ruggedtablets.com

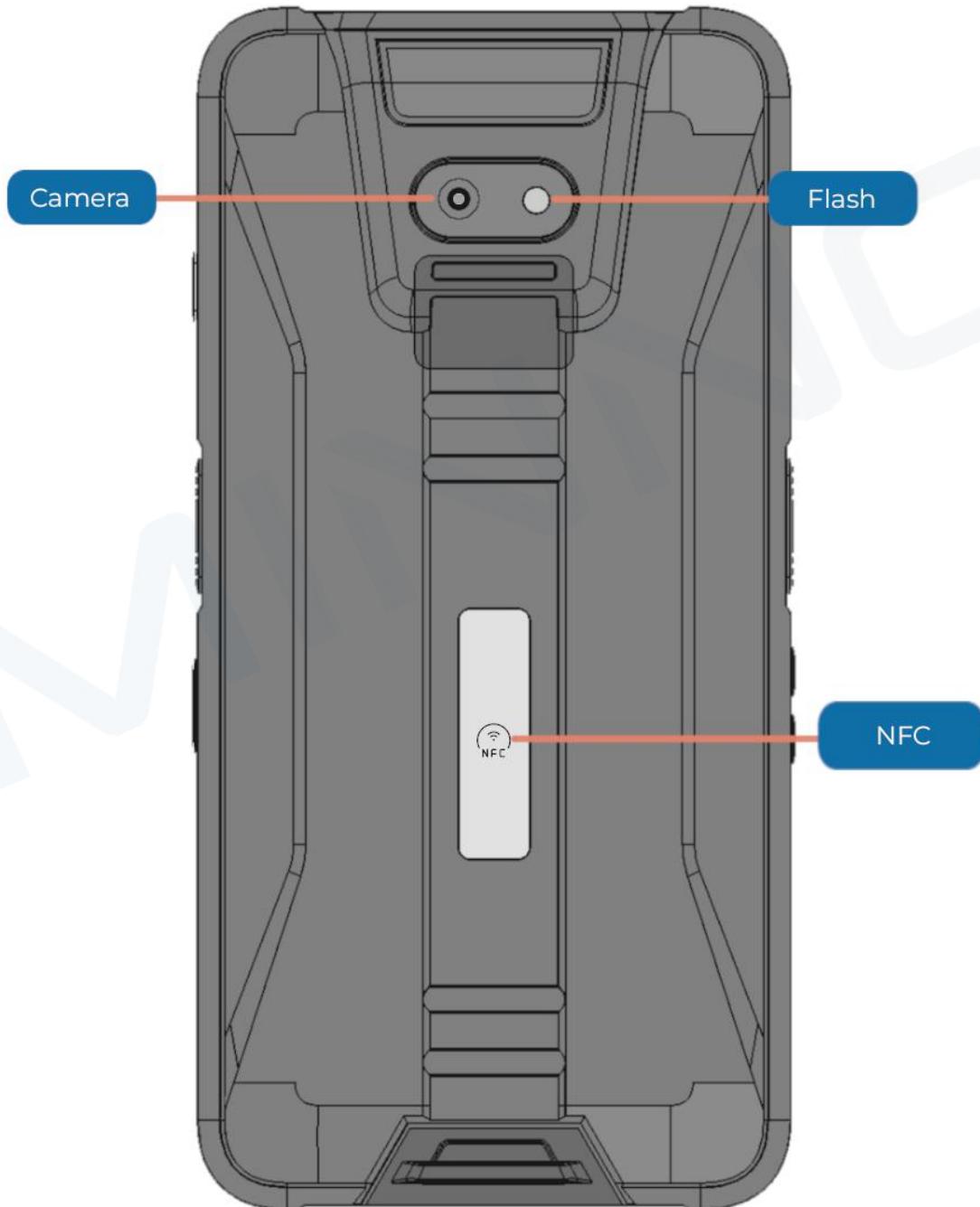
Email: info@minnotablet.com

Phone: +1 805-962-3084

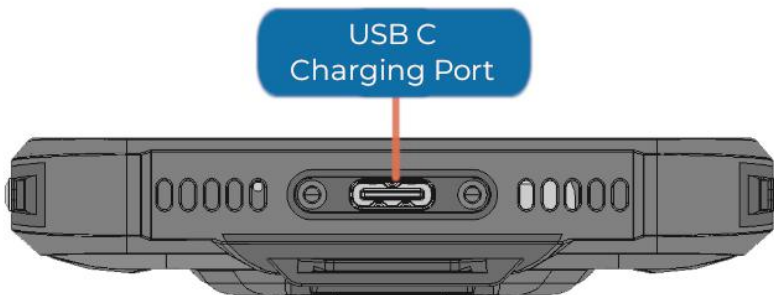
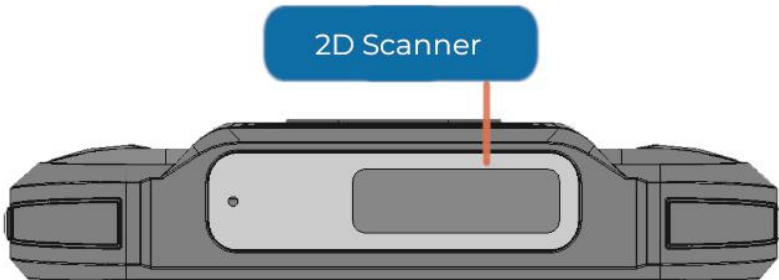
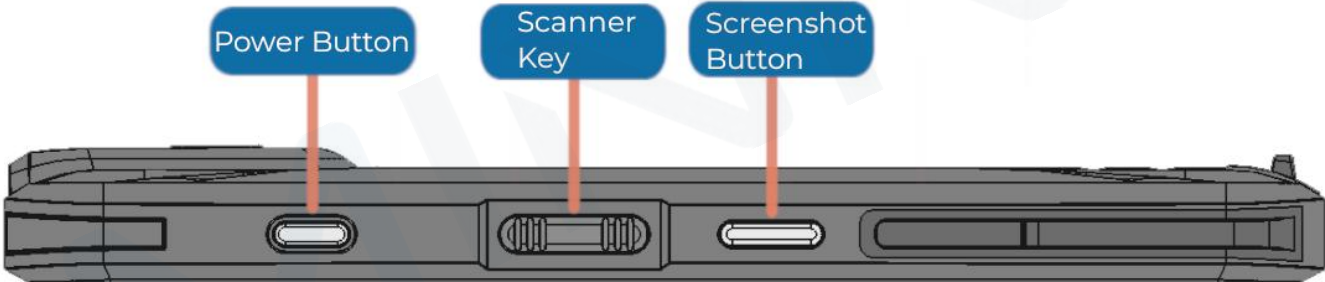
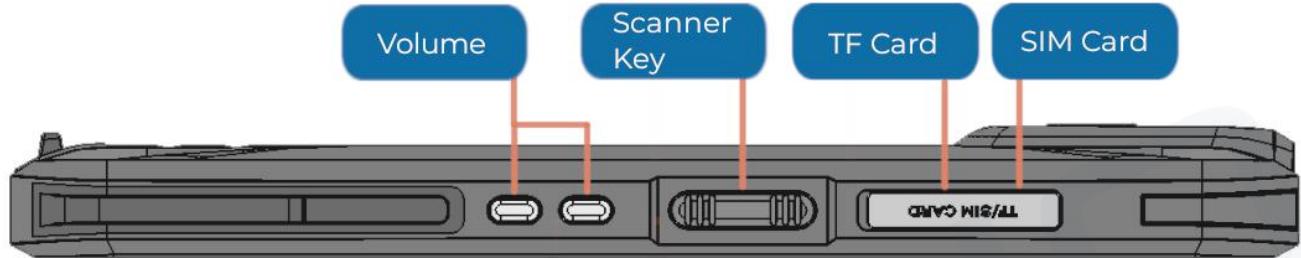
Front View



Back View

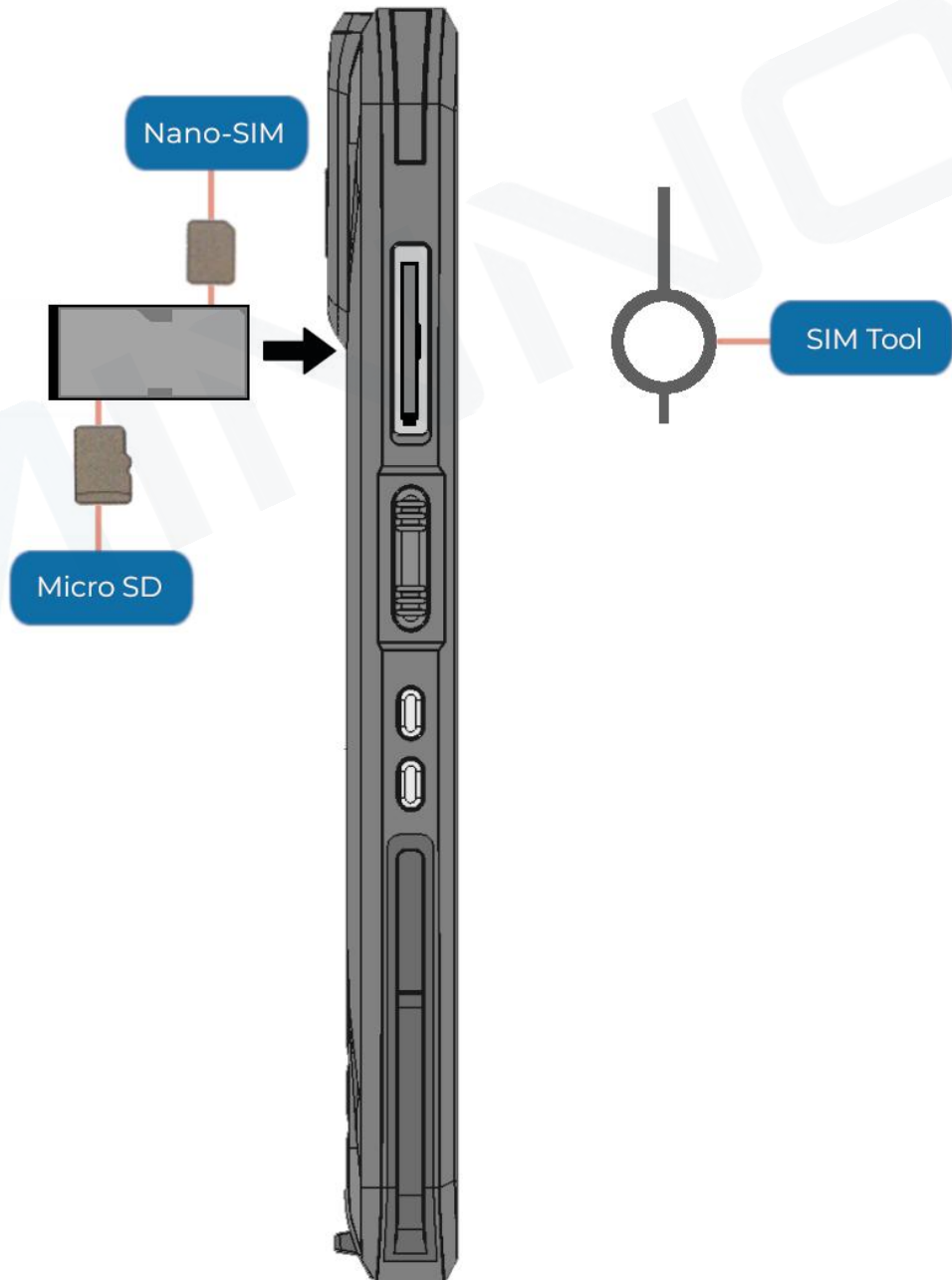


Side View

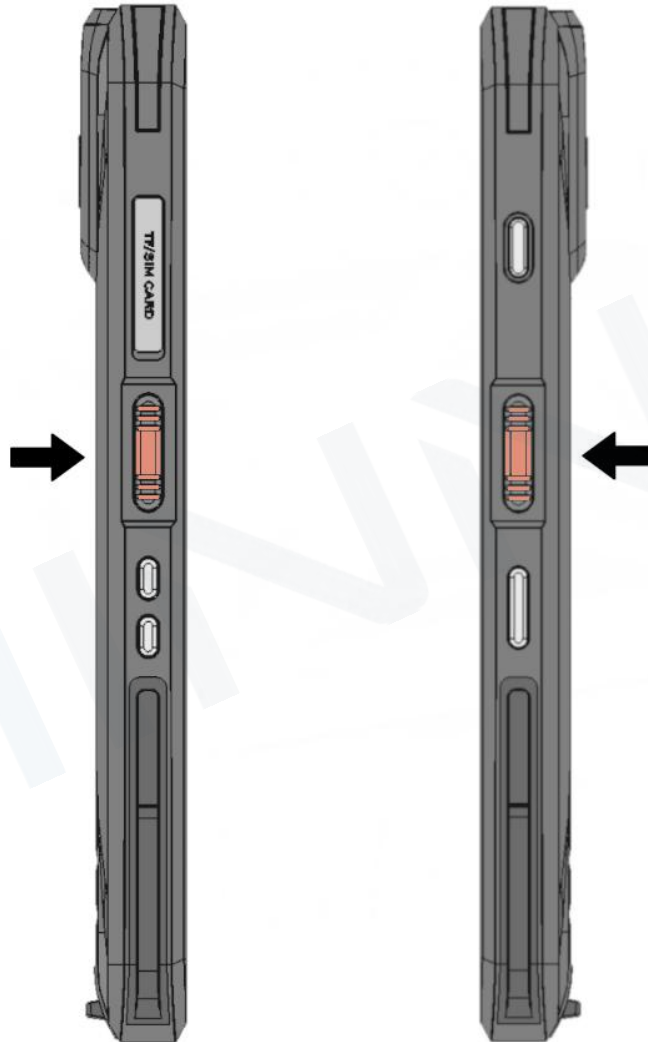


Memory & SIM Installation

Lift the plastic cover off the TF/SIM card slot on the left side of the tablet. Use the metal SIM removal tool (provided) to slide out the TF/SIM card tray. Insert the Micro SD, and Nano SIM card into the corresponding slots on the tray and insert the tray back into the tablet.



Using the 2D Scanner



1. Select a cell or location where scanned data should be entered. Note: If a barcode or QR code is scanned without first selecting a destination for the data, the device will beep but no data will be collected
2. Hold down the large orange side button to activate the scanner.
3. Point the red laser field at the barcode or QR code.
4. The tablet will beep when it has captured and inserted the info into the selected field.